



NARROLINE® DOUBLE-HUNG WINDOW CONVERSION KIT

Narroline® Double-Hung Window Conversion Kits are designed specifically to retrofit existing Narroline windows (made from 1968 to 2013), turning them into easy-to-clean tilt-wash double-hung windows with high-performance Low-E4® glass. They provide quick and easy installation with less mess than traditional window replacement, because there are no window frame tear-out or trim modifications.

EASY UPGRADE

- Includes new sash, balancers, jamb liners, lock and keeper
- Tilt-wash feature allows you to clean both sides of the glass from inside your home
- Existing frame and trim are unaffected, so there's minimal disruption to the home

INCREASED ENERGY EFFICIENCY

- High-Performance Low-E4 glass is 47% more energy efficient than ordinary dual-pane glass in winter and 56% more energy efficient in summer*
- Compressible jamb liner provides a reliable seal between sash and frame

BEAUTIFUL

- Upgraded hardware options
- Create a new look or maintain existing style with upgraded performance and features
- Wide selection of decorative options to complement the look of any home



White

Sandtone

Terratone

How to Identify a Narroline®



✓ Andersen logo in corner of glass

✓ Thin nylon cords in side jambs

✓ Two sash, both slide

✓ Recessed sash lift

*Values are based on comparison of Andersen® 400 Series tilt-wash double-hung window U-Factor to the U-Factor for clear dual-pane glass non-metal frame default values from the 2006, 2009 and 2012 International Energy Conservation Code "Glazed Fenestration" Default Tables.

400 SERIES NARROLINE® DOUBLE-HUNG CONVERSION KIT

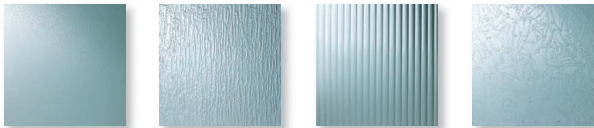
GLASS OPTIONS

LOW-E4® GLASS

- Low-E4® glass
- Low-E4® SmartSun™ glass
- Low-E4® Sun glass
- Tempered glass and other glass options are available. Contact your Andersen dealer.

PATTERNED GLASS

Ideal for letting light into the home while obscuring vision. Available in four attractive patterns.



Obscure

Cascade

Reed

Fern



GRILLES

Choose from dozens of popular designs or work with Andersen to create custom patterns

INTERIOR OPTIONS



Pine

White

EXTERIOR OPTIONS



White

Sandtone

Terratone

HARDWARE

DOUBLE-HUNG LOCK & KEEPER

Stone finish is standard with wood interior units. White finish comes with prefinished interiors.



Standard

Stone | White
(Optional Finishes)
Black | **Gold Dust**



Estate™ (Optional)

Antique Brass | Bright Brass
Brushed Chrome | Distressed Bronze
Distressed Nickel | Oil Rubbed Bronze
Polished Chrome | **Satin Nickel**



DOUBLE-HUNG LIFTS

ESTATE™

Hand Lift

Finger Lifts



Antique Brass | Bright Brass | Brushed Chrome | Distressed Bronze
Distressed Nickel | Oil Rubbed Bronze | Polished Chrome | **Satin Nickel**

TRADITIONAL

Hand Lift

Finger Lifts

Bar Lift



Antique Brass | Bright Brass | Brushed Chrome | **Oil Rubbed Bronze**
Polished Chrome | Satin Nickel | Stone | White

CLASSIC SERIES™

Hand Lift

Finger Lifts

Sash Lift



Stone | **White**

Bold name denotes finish shown.

HARDWARE FINISHES



Antique Brass



Black



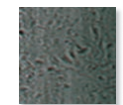
Bright Brass



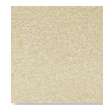
Brushed Chrome



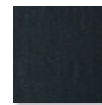
Distressed Bronze*



Distressed Nickel



Gold Dust



Oil Rubbed Bronze*



Polished Chrome



Satin Nickel



Stone



White

*Distressed Bronze and Oil Rubbed Bronze are "living" finishes that will change with time and use.

"ENERGY STAR" is a registered trademark of the U.S. Environmental Protection Agency. Printing limitations prevent exact color and finish duplication.

See your Andersen dealer for actual finish samples.

"Andersen" and all other marks where denoted are trademarks of Andersen Corporation.

©2014 Andersen Corporation. All rights reserved. MS1406-0309 - SS_022

WINDOWS • DOORS
Andersen® 

For more information visit andersenwindows.com/narrowline